

## Default Knowledge Base

Creating Machining Operations » Knowledge Base »

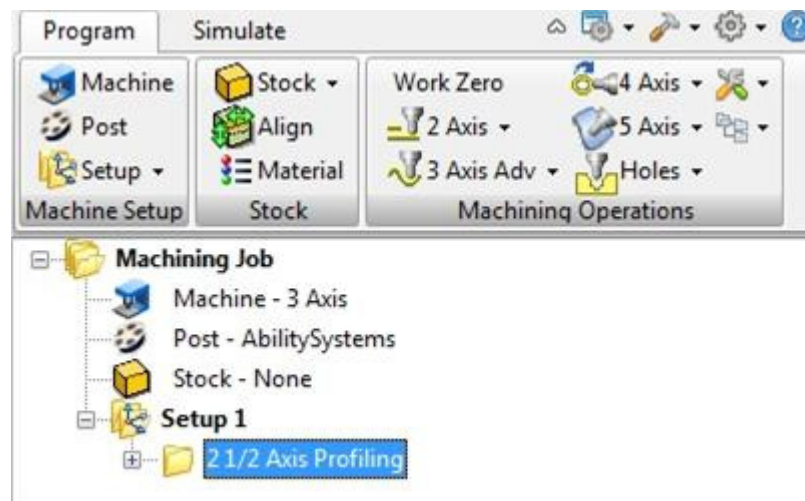


### Default Knowledge Base

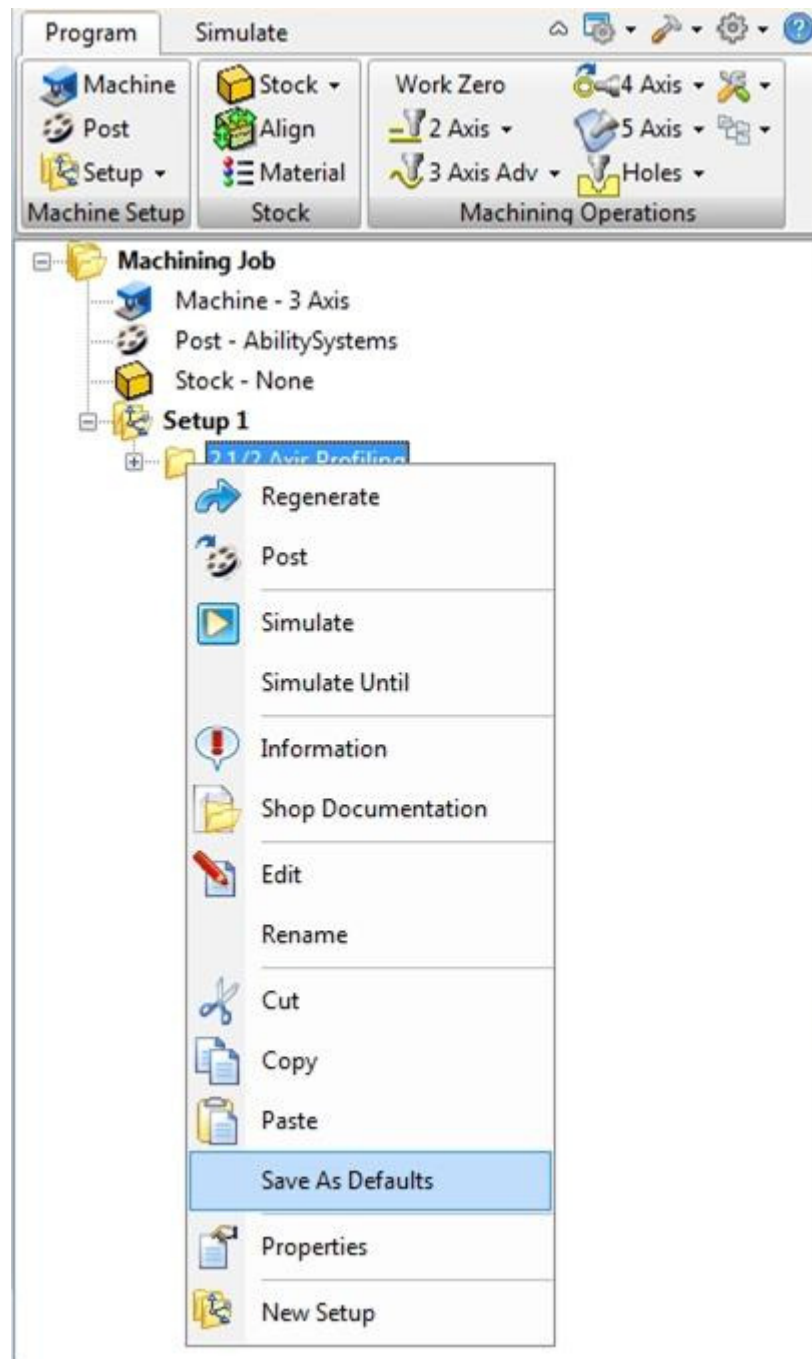
Default Knowledge Base allows user to set default parameters for machining operations. This allows the reuse of the machining parameters without having to enter the same parameters when creating new machining operations on same part or new part files.

To create a default knowledge base,

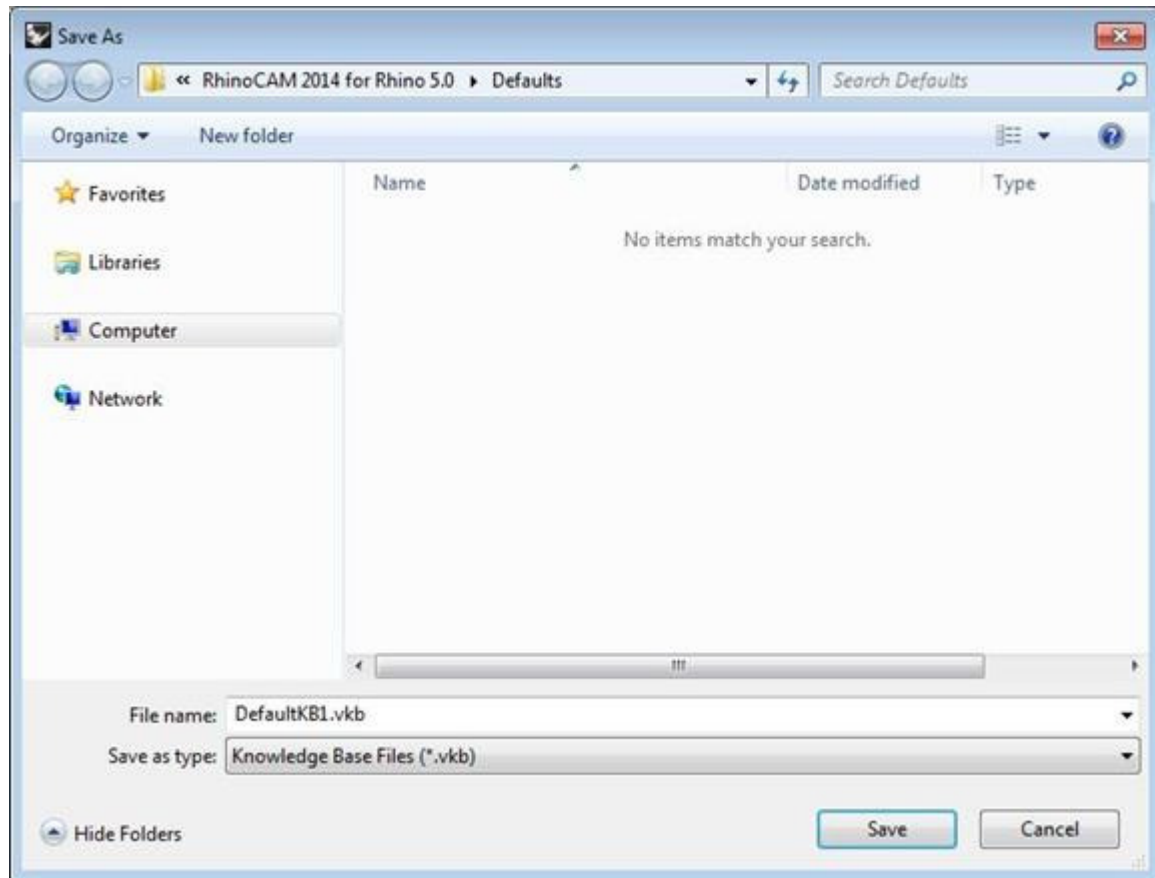
1. Create or Select a machining operation under the **Program** tab in Machining browser.



2. Right mouse button click on a machining operation and select Save As Defaults

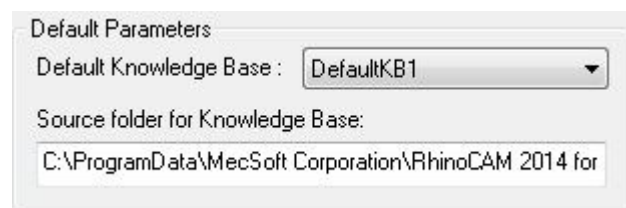


This displays a **Save As** dialog. This dialog appears when a default knowledge base is not specified under Set Machining Preferences.



3. Specify a file name Click **Save**.

- This creates a default knowledge base for the profiling operation and is saved to DefaultKB1.vkb file.
- The saved knowledge base is automatically set as the default knowledge base to load under Machining Preferences and the parameters defined in the knowledge base is used when creating new machining operation.



- Save As Defaults can be set for all machining operation types.
- Once a default Knowledge base is specified under Machining Preferences, selecting Save as Defaults for other machining operation types, adds other operation parameters to the same Default knowledge base file.
- If a default for a specific operation type does not exist, the system defaults are loaded.
- Changing the parameters for the above machining operation and saving as defaults overwrites the default parameters with the new one.
- Multiple Default Knowledge bases can be created and saved. This could come in handy when machining different types of materials, which requires different

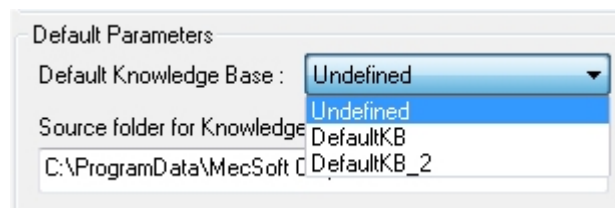
cutting parameters. You could create one for machining Steel, Aluminum, Wood etc...

4. To create a new default knowledge base, change the Default Knowledge base to load under Machining Preferences to Undefined



5. Select a machining operation under the MOps browser, right mouse button click and select Save As Defaults
6. Specify a new file name and click Save. The saved knowledge base is now set as the default knowledge base to load under Machining Preferences and the parameters defined in the knowledge base is used when creating new machining operation.

Note: Only one Default Knowledge base can be loaded. You can change the default knowledge base to load before creating a new machining operation.



Refer to the following section for information on selecting default knowledge from **Machining Preferences**

## Related Topics

[Knowledge Base](#)